

From 1938!



100 Adverts. Supplement.

FLIGHT

FEBRUARY 8, 1940

*Specify*  
**SALTER'S  
SPRINGS**

THE FIRST AND STILL  
THE LEADING SPRINGS  
of the Aircraft Industry

**FITTED for SAFETY**

**Geo. Salter & Co. Ltd.**  
WEST BROMWICH · ENGLAND

**"CONSOL"**  
for **SHELTERS**  
YOUR KEY PERSONNEL

WRITE  
for  
CATALOGUE  
NO  
FL852

**CONSTRUCTORS LTD**  
NICKEL WORKS ERDINGTON  
BIRMINGHAM 24

OWING TO COMPLETION OF CERTAIN CON-  
TRACTS WE ARE NOW IN A POSITION TO  
UNDERTAKE THE FOLLOWING WORK —

<b>MACHINING</b> Capstan Bar Work up to 2" Plan Milling	<b>PLATEWORK</b> Oxy-Gas Cutting
<b>PRESSWORK</b> Blanking and Forming Spot and Acetylene Welding	<b>FINISHING</b> Enamelling and Parkersing.

**ASSEMBLY OF COMPLETE UNITS**

**ANDRE (COMPONENTS) LTD.**  
ENGINEERS  
Felsham Works, Felsham Road, London, S.W. 5

The  
**JOHNSON-FEL  
CRACK  
DETECTOR**  
Supplied along with  
DETECTING  
FLUID

to

Also makers of  
Demagnetising Equipment,  
Transformers, Rectifiers, etc.

**ROLLS-ROYCE**  
by  
**FEL-ELECTRIC LIMITED**  
Flower Street, GARDEN ST. SHEFFIELD, 1. (Crack Detector)

**Rosco** *ARMY AIR FORCE*  
**Cylinder Black**

The well-known protector of Motor  
Cycle Cylinders has proved its efficiency  
after exhaustive tests by both the  
Admiralty and R.A.F. who have specified  
large quantities for use in their respective  
services.

**OWEN BROS. & CO. LTD · HULL · ENG.**

**D. POWIS & SONS LTD.**  
BY BIRMINGHAM WIREWORK CO. LTD.

**MANUFACTURE  
RIVETS AND WASHERS**  
in Copper, Aluminium,  
Light Aluminium Alloys  
and Duralumin.

**SPLIT COTTER PINS**  
in Steel, Stainless Steel &  
Nickel Alloy, non-corro-  
sionable materials, also Brass  
and Copper Panel Pins.  
A.I.D. APPROVED.

FORWARD WORKS, GOLDEN HILLOCK ROAD, SPARKBROOK, BIRMINGHAM, 11  
Telephone: Victoria 265-2 187-66 Telegrams: Powis, Birmingham

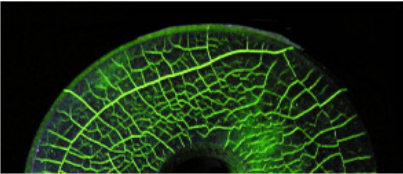


The only UKAS Accredited Lab for onsite  
Calibration of Aerospace MPI Bench Units  
AERO - NDT



## MPI

- Inspection Bench Units - bespoke design service
- Plato II Control System with standard features like Multi- Prompt LED Display for Mode, Current Value, Shot Time and operator prompts
- 10 Point Calibration on each Mode (High Accuracy)
- Warnings and audible alarms.
- Stainless steel hopper and drain tanks
- UV Booth available with extractors and background lighting
- Manufactured in house with Fully Traceable Certification to UKAS (Lab 4168).
- Built to ISO 9001 Standards. On site calibrations undertaken



## DPI

- Inspection Lines to suit applied standard, throughput and work area
- Accessories e.g. UV Lights and Radiometers
- Calibration of Accessories
- Full design service available for bespoke Systems including Storm Cabinets Drying Ovens, Inspection Booths etc

**Johnson and Allen Ltd, NeoCol Wks, Smithfield, Sheffield, S3 7AR.**  
Tel +44 (0)114 2738066 Fax +44 (0)114 2729842. e-mail [info@johnsonandallen.co.uk](mailto:info@johnsonandallen.co.uk)  
[www.johnsonandallen.co.uk](http://www.johnsonandallen.co.uk)

To Date