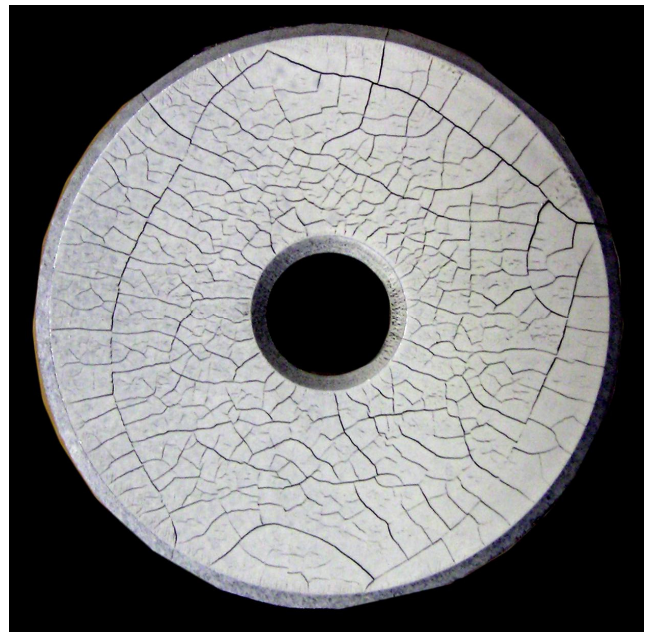
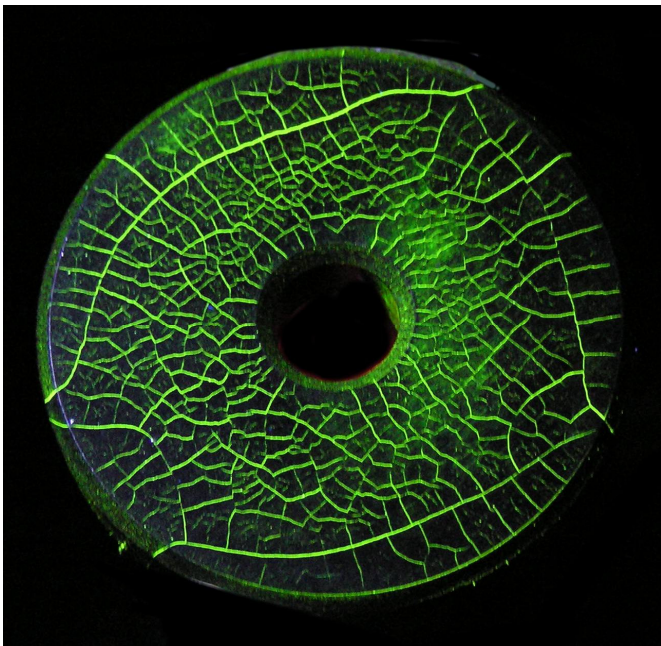


EN ISO 9934-2:2002 Reference Block Type 1

Cracked Test Piece for the evaluation of
Detection media.
(Annex B) Page 15 Fig B.1



Description

The reference block is a disc with two types of natural cracks in the surface, both coarse and fine, produced by grinding and stress corrosion. The block is permanently magnetised by a central conductor through the hole.

Evaluation of detection media is made by visual or other appointed methods.
For a small extra charge, the test piece can be supplied with accompanying photos

A certificate of conformity is supplied as standard.

Johnson and Allen Ltd. offer an extensive range of NDT accessories and equipment.
Please contact us for your requirements of Equipment or Consumables.

Johnson and Allen Ltd, NeoCol Wks, Smithfield, Sheffield, S3 7AR.

Tel +44 (0)114 2738066 Fax +44 (0)114 2729842.

e-mail info@johnsonandallen.co.uk

www.johnsonandallen.co.uk